



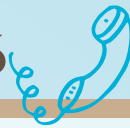
# TWEET & EAT: twitter TRAINING

EVERYONE'S ALL A TWITTER ABOUT TWITTER. WHY? WHAT IS IT ABOUT LIFE IN 140 CHARACTERS THAT HAS SO MANY TWEETING HAPPILY AWAY? TAKE A COUPLE OF HOURS TO LEARN ABOUT THE TWITTERVERSE!

To Register:  
COMPLETE THE  
TWEET & EAT  
REGISTRATION FORM

- Get an overview of Twitter
- Learn how it can be used for your business (and just for fun)
- Set up your Twitter account (Bring a laptop with wireless capabilities for this. If you don't have one, there will be lots of demonstrations)
- Learn the ins and out of developing a following
- Get tips for making each one of those 140 really work for you
- Look at search options for Twitter
- Get an overview of sites that offer Twitter support
- Discuss Twittiquette
- Look at social media, and see how Twitter can tie in with other social media sites such as Facebook
- Get a preview of upcoming social media events

QUESTIONS? CALL 806.367.8086



FRIDAY, SEPTEMBER 11, 2009 • 11:30 TO 1:30  
LUNCH AVAILABLE FROM TGIFRIDAYS (COST ADDITIONAL)

—NO OUTSIDE FOOD, PLEASE—

THE AMBASSADOR HOTEL

3100 I-40 WEST, AMARILLO • (806) 358-6161

EVERYONE'S  
WELCOME

\$25



This is one of a series of Lunch & Learns focused on marketing offered by The Panhandle Tourism Marketing Council. [www.texasptmc.org](http://www.texasptmc.org)

